



**Electrolux**  
PROFESSIONAL

## Standard Preparation 2000 mm Solid Wall Shelf with Brackets

ITEM # \_\_\_\_\_

MODEL # \_\_\_\_\_

NAME # \_\_\_\_\_

SIS # \_\_\_\_\_

AIA # \_\_\_\_\_



132828 (WSS204N)

Solid Wall Shelf with  
brackets, 2000mm

### Short Form Specification

Item No. \_\_\_\_\_

Made from 304 AISI stainless steel, 1mm in thickness.  
Upturned edges. Integral radiused rear upstand, h=30mm.  
Wall brackets allow the shelf to be positioned at different heights.

### Main Features

- Smooth surfaces, rounded corners, absence of edges and rear upstand facilitate cleaning operations.
- Sturdiness, stability and reliability of table accurately tested.

### Construction

- Made entirely in 304 AISI stainless steel, 10/10 in thickness; with a Scotch Brite finish.
- Upturned edges, 50 mm high, to guarantee operator safety.
- Incorporates a rear upstand to avoid spillage between wall and shelf.
- 100 mm upstand with 10 mm radiused corner and 13 mm deep, designed to be used against a wall.

APPROVAL: \_\_\_\_\_



Experience the Excellence  
[www.electroluxprofessional.com](http://www.electroluxprofessional.com)



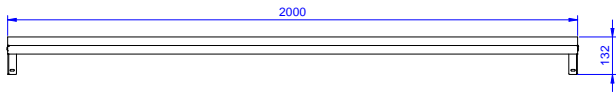
**Electrolux**  
PROFESSIONAL

## Standard Preparation 2000 mm Solid Wall Shelf with Brackets

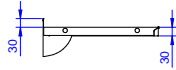
### Key Information:

External dimensions, Width:	
132828 (WSS204N)	2000 mm
External dimensions, Depth:	400 mm
External dimensions, Height:	30 mm
Upstand Dimensions, Height:	23 mm
Upstand Dimensions, Depth:	2 mm
Upstand Dimensions, Radius:	R=10
Net weight:	10 kg

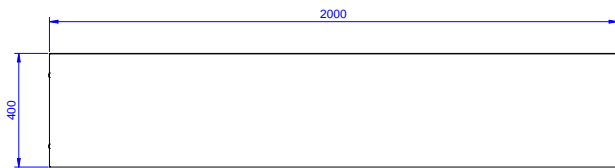
Front



Side



Top



Standard Preparation  
2000 mm Solid Wall Shelf with Brackets

The company reserves the right to make modifications to the products  
without prior notice. All information correct at time of printing.

2026.01.01